

8570/11-506 Art. No. 150494



- For use in Zones 1, 2, 21 and 22, degree of protection IP66, extreme temperature range of $-50 \dots +55 \text{ }^{\circ}\text{C}$
- Optional: pluggable, easily retrofittable Ex e or Ex i auxiliary contacts for control and signalling purposes
- With motor switching capacity AC-3 in accordance IEC/EN 60947-3
- Variants for use in the US / Canada upon request

WebCode **8570A**



R. STAHL Series 8570/11 SolConeX sockets for Zone 1/21 in a 3-, 4- and 5-pole version have full AC-3 switching capacity up to 16 A. The high degree of protection IP66 guarantees the highest level of protection against the penetration of dust and/or water in any application position. Self-cleaning lamellar contacts provide optimum contact and the plugs can be inserted and removed in the zero position quickly and easily. The load disconnect switch, with mechanical locking device and a handle that can be locked in the 0 or I position, is an additional safety feature.

Technical Data

Explosion Protection

Application range (Zone)	1 2 21 22
Certificate IECEX Gas	IECEX PTB 05.0023
Certificate ATEX Gas	PTB 03 ATEX 1227
Certificate IECEX Dust	IECEX PTB 05.0023
Certificate ATEX Dust	PTB 03 ATEX 1227
Ambient temperature $^{\circ}\text{C}$	$-30 \dots +55 \text{ }^{\circ}\text{C}$
Gas explosion protection IECEX	Ex db eb IIC T6 Gb
Gas explosion protection ATEX	Ⓔ II 2 G Ex db eb IIC T6 Gb
Dust explosion protection IECEX	Ex tb IIIC T80 $^{\circ}\text{C}$ Db
Dust explosion protection ATEX	Ⓔ II 2 D Ex tb IIIC T80 $^{\circ}\text{C}$ Db
Certificates	ATEX (PTB), Brazil (ULB), Canada (CSA), EAC (STV), IECEX (PTB)
Languages of documentation	German English

Electrical Data

Rated operational voltage AC2	346 – 415 V
Rated operational voltage AC	200 – 240 V / 346 – 415 V
Rated operational voltage AC	200 – 240 V
Rated operational current	16 A
Rated operational current	0 – 16 A
Frequency range	50 – 60 Hz
Voltage type	Low voltage
Auxiliary contact exist	No

8570/11-506 Art. No. 150494

Electrical Data

N-poles exist	Yes
Optional auxiliary contact	Yes
PE-poles exist	Yes

Ambient Conditions

Min. ambient temperature	-30 °C
Max. ambient temperature	+55 °C
Max. ambient temperature note	max. 16 A
Ambient temperature	-30 °C ... +55 °C

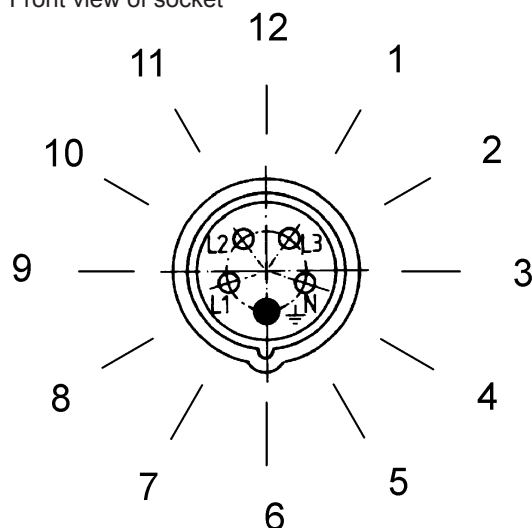
Mechanical Data

Type of protection (IP)	IP66
Type of protection note	according to IEC/EN 60529
Enclosure material	Polyamide, glass fibre-reinforced
Silicone-free	Yes
Weight	1.45 kg
Connection terminals min.	1.5 mm ²
Connection terminals solid max.	2 x 6 mm ²
Connection terminals finely-stranded max.	2 x 4 mm ²
Type of connection line	finely-stranded solid
Width	115 mm
Height	181 mm
Length	248 mm
Identification colour	red
Coding (clock hour position)	6
Padlockable in	in 0 and I position
Series	SolConeX
Detailed number of poles	5 P (3 P + N + PE)

Arrangement of earth contact sockets

Example:

Clock hour position,
Front view of socket

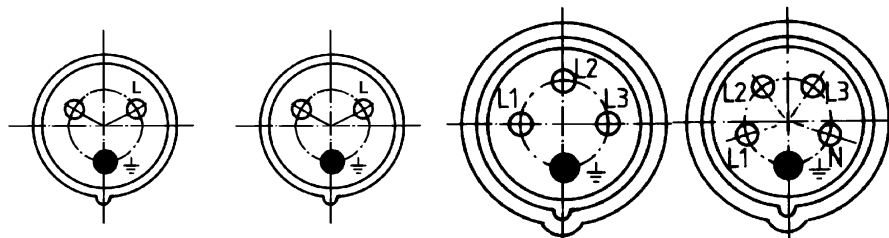


Example:

Clock hour position

Marking of connections

Front view of sockets



230 V = 6 h

2 P + PE

3 P + PE

3 P + N + PE

8570/11-506 Art. No. 150494

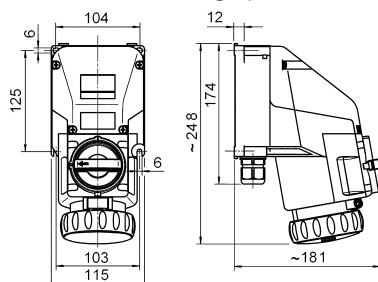
Components

Cable entry	1 x M25
Cable diameter	7 – 17 mm
Cable entry note	positioning on the top or at the side, according to the order
Material of cable entry	polyamide black
Plug	1 x M25
Material stopping plug	polyamide black
Entries	2 x M25

Technical Drawings



Dimensional Drawings (All Dimensions in mm [inches]) – Subject to Alterations



Wall-mounting socket 4-pole / 5-pole

Accessories and Spare Parts

Auxiliary contact

	Art. No.
 1 NC max. 500 V AC, max. 110 V DC max. 6 A 2 x 0.5 ... 2.5 mm ² solid / finely stranded	150680
1 NC, gold contact max. 500 V AC, max. 110 V DC max. 6 A 2 x 0.5 ... 2.5 mm ² solid / finely stranded	150684
1 NO max. 500 V AC, max. 110 V DC max. 6 A 2 x 0.5 ... 2.5 mm ² solid / finely stranded	150682
1 NO, gold contact max. 500 V AC, max. 110 V DC max. 6 A 2 x 0.5 ... 2.5 mm ² solid / finely stranded	150686

We reserve the right to make alterations to the technical data, dimensions, weights, designs and products available without notice. The illustrations cannot be considered binding.